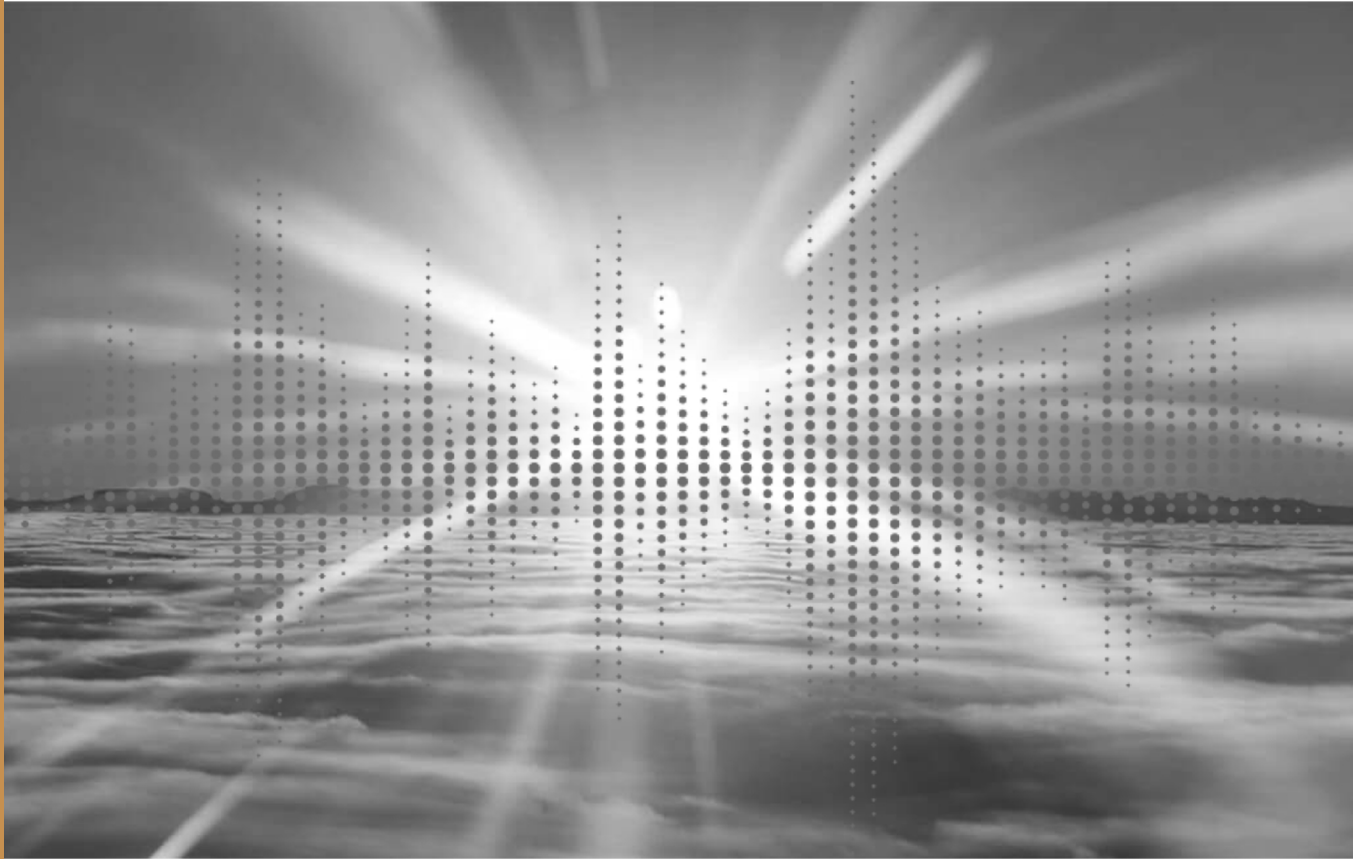


Quantum Optimiser

Transducers



Reharmonise, strengthen and revitalise
all **biological systems of life**

Everything that lives, vibrates!

TRANSDUCERS



Definition

The Transducers (from the Latin **trans** = through, and **ducere** = to conduct) are devices that induce the transfer of energy or information from one medium (quantum, for example) to another (material, eg).



Origins

The transducers were imagined, designed and developed by a researcher of Belgian origin, Jean-Pierre B, following many years of intensive research in the field of quantum health (i.e. related to information and vibrations, as opposed to matter).

Function

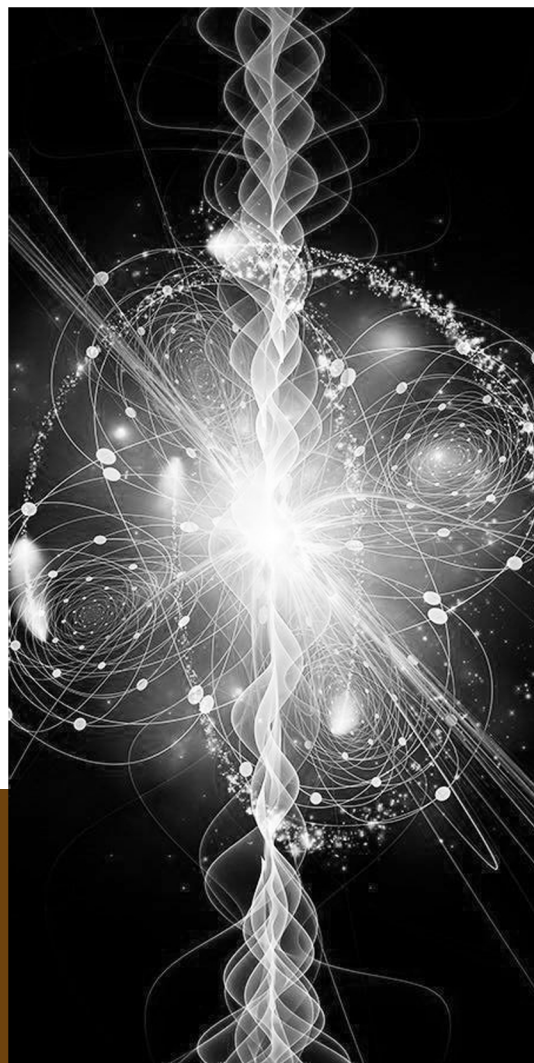
Thanks to a "quantum engraver" imagined and developed by its inventor, a considerable amount of information is "stored" on wooden supports (mainly beech and lime), the latter playing somehow a role of "vegetal hardware"

This information is then integrated into the matter and spread into the environment, amplified by a neodymium magnet inserted into the devices for this purpose.

Tests have shown that this information, which varies from one device to another depending on the assignment of its specific role (see page 6), remains intact and therefore usable for several years.

It seems established that each device also acts as an interface between the archetypes from the Akashic fields, containing the original information about a given object or system, and its counterpart in the material world.

Such types of fields were discovered and demonstrated by the scientist Rupert Sheldrake, who coined the term "morphogenetic fields": <https://www.sheldrake.org/>



TRANSDUCER

MODELS

”

A day will come when
a hand of light will
strike the wood
from the heart, with
such insistence that
I could not help but
get up and open.

- Christian Bobin

04-06

Stationary device (Yin)

This device has been developed to enable you to take care of your home and its inhabitants.

07

Portable device = Energy pendant (Yang)

This one is designed for mobility.



07

Food and drink tray = Health tray !

Its programming is specifically designed for food and liquids intended for consumption.

08-09

DNA Plate = Distant Norm Activation

It readjusts and optimizes the natural energy balance of the body, even from a distance.

STATIONARY DEVICE (YIN)

As the title indicates, the tendency of the fixed device at the level of energies is of the Yin type.

This device has been developed to enable you to **take care of your home and its inhabitants.**

It **reharmonises, strengthens** and **revitalises** all the biological systems of life.

Indeed, it has been programmed to **protect you from any type of nuisance and to optimise to its best extent your health and well-being potential.**

Impact

It impacts on **housing, people, animals, plants** (i.e. any living biological system) ... in a **non-selective way** (unlike the DNA device mentioned below).

The Yin transducer "transmits" the stored information into the physical world with a range of up to about 97 meters, according to the measurements made, thanks to the amplification of the integrated neodymium magnet.

ALLOWING LIFE TO REGAIN ITS RIGHTS

The information programmed into the fixed device provides **optimal and lasting protection against all electromagnetic aggressions**, from electric fields, Wifi, and high frequencies including 5G.



Furthermore, it contains information **allowing life to regain its rights** by reconnecting to the original resonance fields for a given material or substance, provided that they are natural.

STATIONARY DEVICE

(YIN)

Caution

*The devices **neutralize the impact** of the nuisances on the various organisms and not the incident waves themselves! (Like an umbrella: it protects, but does not stop the rain from falling).*

(See Rupert Sheldrake writings on this subject)

<https://www.quantasia.ch/en/2020/01/08/morphic-resonance-rupert-sheldrake/>)

Use

Choose to place the device in a bright location as far away as possible from your wi-fi modem, smartphone, tablet or any other form of nuisance: in short, it should **remain stable on a given surface, as exposed as possible to sunlight and without being constantly moved.**

By analogy, a fireman is more effective at putting out a fire when he is not in the middle of it himself!

DIFFUSE AN ENERGETIC SIGNATURE

In addition, it is possible to **place a substance** in the space provided for this purpose in order to diffuse its "energetic signature" (essential oil for example); everything in its environment will then be impacted by the information emitted.



STATIONARY DEVICE

(YIN)

Composition :

Made of beech or lime wood.

Size:

10 cm by 7 cm by 4 cm high.

Numerous measurements, repeated over more than a year, using electro-acupuncture (among various methods) as a yardstick , have confirmed the **remarkable effectiveness of the device**.

EXPRESS OUR INTENTIONS

It is interesting to regularly address the Yin Transducer as if we were talking to a natural intelligence, to express our gratitude on the one hand, but also our intentions (especially in terms of well-being), thus allowing us to better focus the thoughts and wishes expressed.

This will result in greater clarity, which will have a significant impact on the effectiveness of the results achieved.

The operating principle is based on what is known as **quantum entanglement***

**In quantum mechanics, quantum entanglement is a phenomenon in which two particles form a linked system and have quantum states that depend on each other regardless of the distance between them.*

See the following references about this topic:

<https://www.youtube.com/watch?v=Q-KRSGQvr6U>

and

https://fr.wikibooks.org/wiki/Th%C3%A9orie_quantique_de_l%27observation

PORTABLE DEVICE

ENERGY PENDANT (YANG)

The best way to use it is to wear it around the neck.

This one, unlike the fixed yin device mentioned above, is designed for mobility, although it has the same programming features.

However, its advantage, because of its portability, is that it has a positive impact on your location, by modifying the vibrational atmosphere at work, school, or in your daily activities.

Composition :

Made of beech or lime wood.

Size:

34mm X 48mm approx..



FOOD AND DRINK TRAY = HEALTH TRAY!

Its programming is specifically designed for **food** and **liquids** intended for consumption. It is the most spectacular in terms of perception. It induces a **regeneration** of the vital forces degraded by various human manipulations. It has an astonishing, quick and lasting impact on the **smell**, **taste** and **structure** of the food and liquids deposited on it.



Composition :

Made of beech or lime wood.

Size:

Approximately 26 cm by 40 cm by 2 cm thick for the large model, and 6.5 cm square for the small hexagonal model intended for a bottle, for example.



DNA PLATE

DISTANT NORM ACTIVATION

Optimal health depends on the balance of many different parameters. This device, without known equivalent today, is the result of a long reflection: it permanently **readjusts the natural energy balance of the body**, whether it is present at your side or located thousands of kilometers away.

Observations on the effects on health ALWAYS show an improvement, although there are significant individual differences, as every person is at a specific point in their evolution when they receive the device.

An almost immediate improvement can be felt in some cases.

It can also occur progressively, depending on the type and importance of the imbalances present and the intrinsic capacity of the physical body to integrate and spread the information transmitted by the device.



This new version of the device makes it possible, from a fingernail clipping, to **transfer multiple pieces of information specific to a given subject, without any distance limit** (via scalar waves and neutrinos).

This remarkable process opens countless doors to the **optimisation of one's potential and autonomy**.

DNA PLATE

DISTANT NORM ACTIVATION

The device thus seems to be able to "manage" the expressed needs of each individual subject according to each moment, thus allowing a "guidance" on his or her personal path, which will continue as long as the will to connect and favourable intentions persist in the person's heart.

Composition :

Made of beech or lime wood.

Size

12 cm x 12 cm approx.

Protective plate

The cover plate is made of Plexiglas and is available in various colours.



COMMON FEATURES

The common features of these devices are briefly described as follows:

- They do **not need electricity** to work (this is essential, because it is through the alternating electric current that harmful vibrations, such as ELF (= Extremely Low Frequencies), as well as electric and magnetic fields, can alter the health of living organisms.
- It is the wood itself that has been programmed, thanks to its resonance properties!
- Extremely elaborate and complex programs are incorporated.
- The developed "quantum imprinter" is the result of many years of research. Its design is not disclosed for protection reasons as well as to ensure its ethical use.
- Each device is protected against malicious intent to use, copy or transfer its data. In such a case, the device would automatically switch off itself and become permanently unusable!



Your advisor



info@quantum-optimiser.com
quantum-optimiser.com